

PetSafe® 

User Guide

Guide d'utilisation

Bedienungsanleitung

Manuale di istruzioni

Guía del usuario

Gebbruikershandleiding

Brugsanvisning

Användarhandbok

Instrukcja obsługi

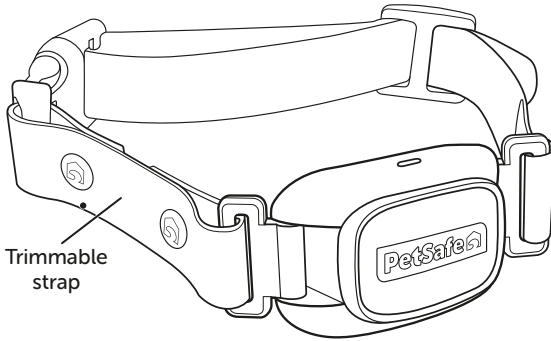
Használati útmutató



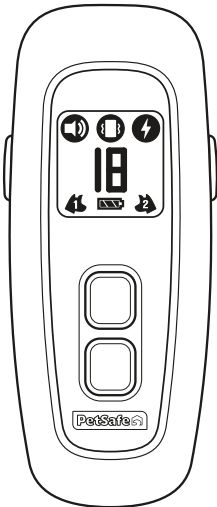
EN

Pro Dog Trainer with Remote

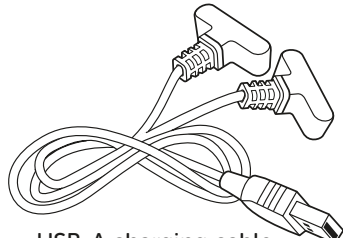
What you have:



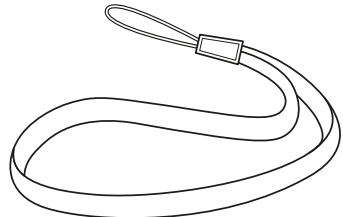
Collar
with medium contact points



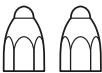
Remote



USB-A charging cable
(USB-A adaptor not included)



Wrist strap



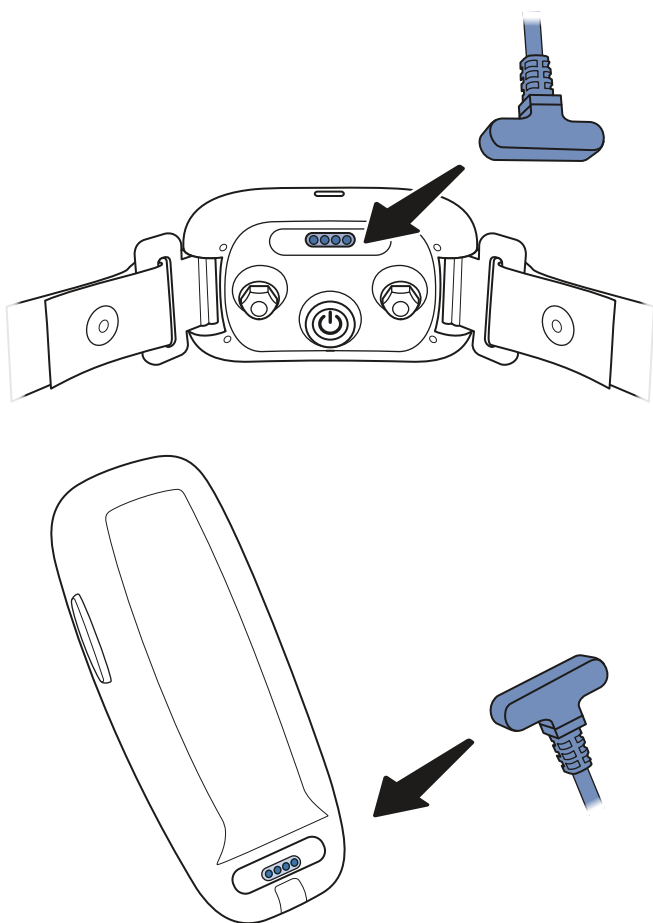
Long contact points



Test light tool

Charge the collar and remote


1



Connect one end of the USB-A charging cable to the magnetic charging port on the back of the collar. Connect the other end to the magnetic charging port on the back of the remote.

Plug the USB-A charging cable into a USB-A power outlet or adaptor. Leave the collar and remote plugged in until fully charged; this will take about 2 hours.

The LED on the top of the collar will glow solid green when the collar is charging and will start flashing green when the collar is fully charged.

The battery icon () on the remote will appear full when the remote is fully charged.

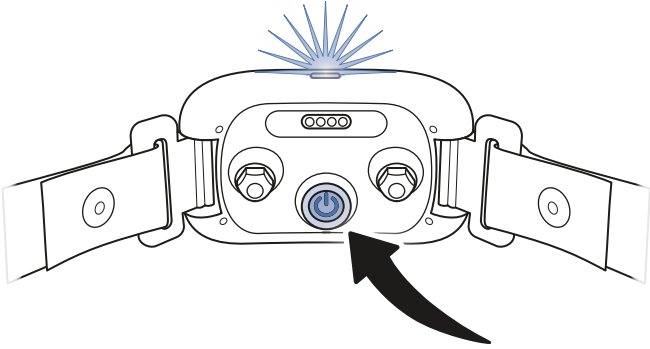
Each charge can last up to 20 hours, depending on frequency of use.

The collar LED will flash red when the collar needs to be charged. To maximise battery life, turn off the collar when not in use.

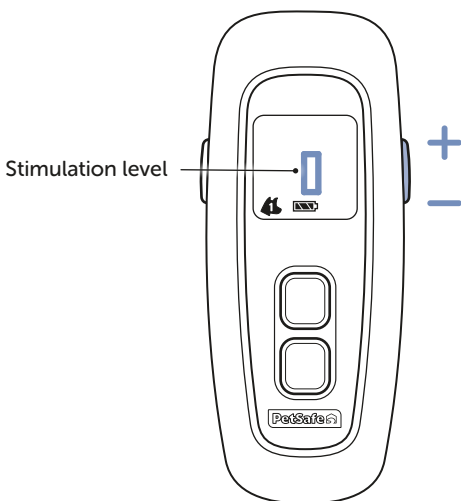
The remote is always on, but the display turns off automatically when not in use.

Test the trainer

2



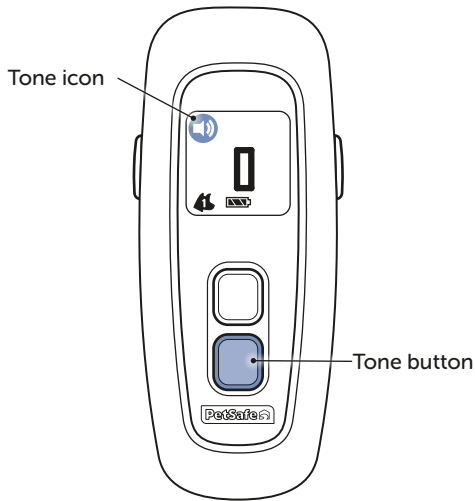
Once the collar is fully charged, turn it on by pressing and holding the power button until the collar beeps low to high and the LED on the top of the collar flashes green.



Press any button on the remote to wake the display.

The number shown at the center of the display is the current stimulation level. Use the rocker switch on the right side of the remote to change the stimulation level. Level 0 is vibration only; levels 1 through 19 are increasing levels of static stimulation.

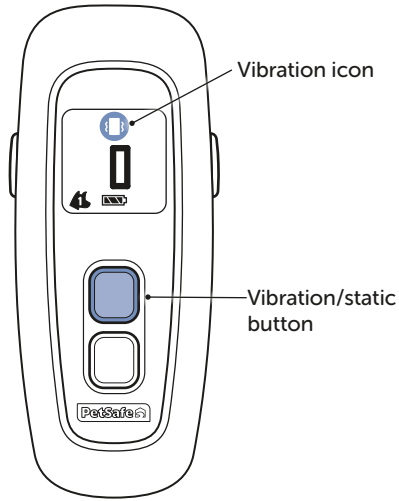
The button on the left side of the remote is used to toggle between Dog 1 and Dog 2 if you have purchased a second collar and paired it with the remote to make a 2-dog system (see [page 14](#)).



To deliver a tone, press and hold the tone button.

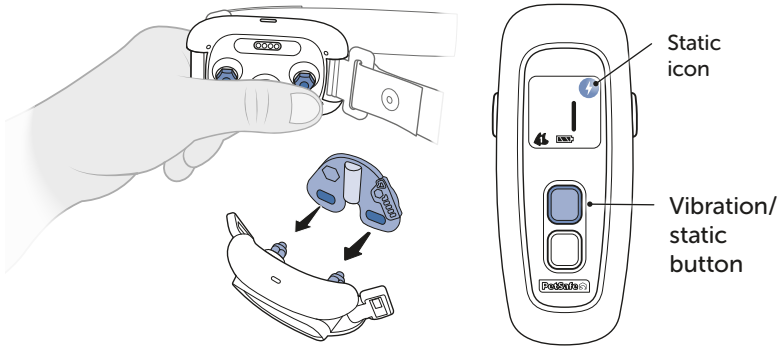
The collar will tone and the remote will display the tone icon (🔊).

Important: The collar and remote are paired to one another during manufacturing. Should the collar and remote lose their pairing at any time, visit petsafe.com for re-pairing instructions.



To deliver a vibration, set the stimulation level to 0 (vibration only) and then press and hold the vibration/static button.

The collar will vibrate and the remote will display the vibration icon (🔊). There is only one level of vibration.



We recommend you experience firsthand how static stimulation functions. Start at the lowest level.

- a. Place one finger over both contact points of the collar.

Optional: To test the collar without feeling the static stimulation, hold the collar contact points against the wires on the provided test light tool. When the collar delivers a static stimulation, the LED on the test light tool will illuminate.

- b. Set the stimulation level to 1 (the lowest level of static stimulation).
- c. Press and hold the vibration/static button for 1 to 2 seconds.

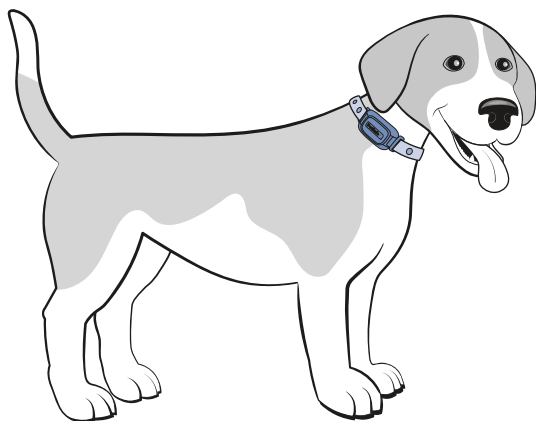
A static stimulation will be delivered to the collar and the remote will display the static icon (⚡). At this level you may not feel the stimulation.

- d. Repeat the previous steps, increasing the stimulation level each time, until the sensation begins to feel uncomfortable.

Important: Continuous stimulation is limited to 10 seconds. To deliver a longer stimulation, release and re-press the vibration/static button.

Fit the collar

7



Now that you are familiar with how the trainer works, it's time to fit the collar to your dog.

First, turn off the collar by pressing and holding the power button until the collar beeps high to low and the LED glows red and then turns off.

With your dog standing comfortably, place the collar high around their neck, close to the ears. The contact points should be on the side of your dog's neck, touching the skin. If your dog has long or thick hair, it may be necessary to switch to the long contact points provided or trim (not shave) the hair around the contact points to make sure that contact is consistent.

Important: Check the tightness of the collar by inserting one finger between the end of a contact point and your dog's neck. The fit should be snug but not constricting. If your dog shakes their head after fitting, the collar should not move. Recheck

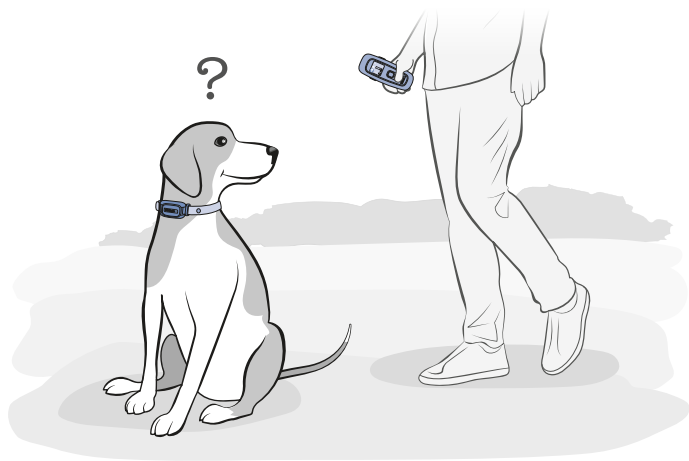
the fit of the collar frequently as your dog becomes comfortable wearing it.

Once you are satisfied with the fit of the collar, remove it from your dog and trim the excess strap, making sure to allow room for growth or a thicker winter coat.

Important: Do not leave the collar on your dog for more than 12 hours a day, and never attach a lead to it — use a separate collar or harness for that. See the **Let us help!** guide included with the product for more important safety information about how to fit and use the collar.

Find the best stimulation level for your pet

8



The next step is to find your pet's "recognition level." The recognition level is the lowest stimulation level that your dog begins to notice.

Important: Always start at the lowest stimulation level and work your way up.

- a. Turn the collar back on and place it on your dog.
- b. Take your dog to a calm environment where they are unlikely to be excited or distracted.
- c. Select level 0 on the remote and then press and hold the vibration/static button for 1 to 2 seconds. Watch your pet for a reaction.

Important: You are looking for a very slight reaction such as your dog twitching their ears or picking up their head and looking around. Your dog should not vocalise or panic when receiving a stimulation. If this happens, the stimulation is too high and you need to go back to the previous level.

- d. If your pet shows no reaction to the vibration, move on to static stimulation. Select level 1 on the remote and then press and hold the vibration/static button for 1 to 2 seconds. Watch your pet for a reaction.
- e. If your pet shows no reaction, repeat this stimulation level several times before moving up to the next level.
- f. Continue moving up through the static levels until your pet reliably responds to the stimulation.
- g. If your pet continues to show no response at level 19, check the fit of the collar. You might also want to test it on your hand at a lower level to make sure the collar is working.

Important: Please note that during instances of high or extreme distraction, higher levels of stimulation may be required to get your dog's attention.

Once you've found your pet's recognition level, you're ready to start using the trainer. See the following page for some important training tips.

Training tips

If you are attempting to teach your dog a behaviour, make sure your dog understands what you want before introducing static stimulation. You can do this using your dog's favourite treats. If your dog looks nervous, scared or confused after static stimulation, return to treat training until you are sure your dog understands the cue.

When to start training

To use the trainer, your dog should be at least 6 months old and at least 3.6 kg. You can begin basic obedience training (without the trainer) as soon as you bring your puppy home.

Stopping unwanted behaviour

The stimulation level should be enough to interrupt your dog and give you the ability to redirect your dog's attention to another behaviour.

It's best if the behaviour you redirect your dog to is incompatible with the unwanted behaviour. For instance, if training your dog not to jump, having them sit instead is incompatible and will keep them from jumping.

Note: Using praise or treats immediately after the correct response is great for encouraging your dog to repeat the desired behaviour, and can help strengthen the communication between you and your dog.

Collar conditioning

You don't want your dog to associate the training collar only with being corrected. While your dog is wearing the training collar, make sure to spend lots of time playing and letting your dog be a dog.

The importance of timing

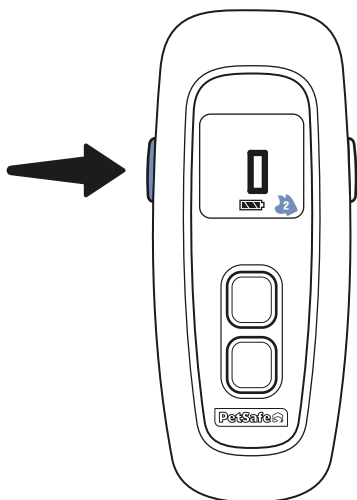
Proper timing is essential for static training to be effective. You should apply the static stimulation immediately (within 2 seconds) of an undesirable behaviour. This will help your dog make the association between the undesirable behaviour and the static stimulation.

If your dog seems nervous, scared or confused after applying a static stimulation, stop using the stimulation and make sure your dog has learned an appropriate behaviour that will remove the static stimulation and/or earn them a reward. For example, your dog should learn that heeling is a behaviour that is acceptable and rewarding prior to being corrected for pulling on a lead. This will keep your dog from being confused and will give them the opportunity to better control the consequences.

Pair a second collar with the remote

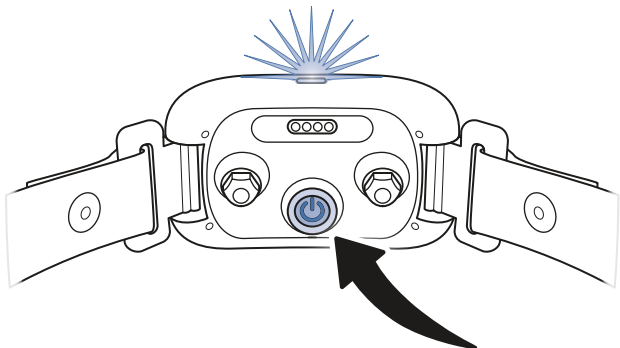
You can turn your trainer into a 2-dog system by purchasing a second training collar (sold separately). Complete the following steps to pair the second collar with the remote.

1



Press and hold the button on the left side of the remote until the remote displays the Dog 2 icon (🐕).

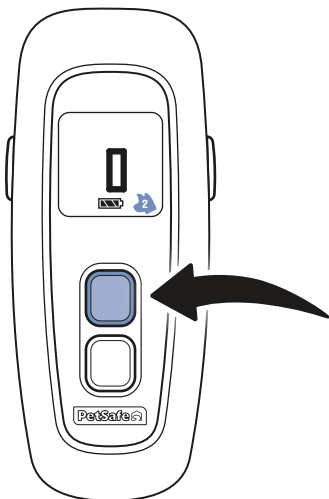
2



Fully charge the second collar and then make sure it is turned off.

Press and hold the power button. The collar LED will glow green and then (after about 5 seconds) turn off. When the LED turns off, release the power button. The collar is now in pairing mode.

3



Press the vibration/static button on the remote. The collar LED will flash green 5 times to confirm it is paired with the remote.

Once the second collar is paired with the remote, follow the steps provided earlier in this guide to fit the second collar to the pet who will be wearing it, and to find that pet's best stimulation level.

We recommend marking the two collars so you'll know which is which (Dog 1 or Dog 2). To deliver a tone or stimulation to:

- The original collar (Dog 1), use the left button to select Dog 1 (🐕) and then press the tone or vibration/static button.
- The second collar (Dog 2), use the left button to select Dog 2 (🐕) and then press the tone or vibration/static button.

The remote will save the most recent stimulation level used for each pet; when you switch between pets, the stimulation level will switch automatically.

Important: For important safety and warranty information, please see the **Let us help!** guide included with your product.