



**User Manual**

# **Training Collar System**

[www.ipets-mall.com](http://www.ipets-mall.com)

# Table of Contents

Important Safety Information .....	2
Components .....	3
How the Dog Training System Works .....	5
Features .....	5
Key Definitions .....	6
Remote Transmitter .....	6
Collar Receiver .....	7
Operating Guide .....	8
Step1 Prepare the Remote Transmitter and Receiver Collar.....	8
Step2 Pairing Collar Receiver to Transmitter.....	10
Step3 Test the Training System Functions.....	11
Step4 Fit the collar-receiver.....	11
Step5 Re-thread the collar(as diagram) .....	12
Step6 Re-thread the collar .....	13
Frequently Asked Questions.....	14
Troubleshooting .....	15
General Training Tips .....	15
Common size of different dogs .....	17
LIMITED 90 DAYS WARRANTY .....	17
iPets CUSTOMER SERVICE .....	17

# Important Safety Information

**WARNING: NOT FOR AGGRESSIVE DOGS.** Do not use this product if your dog is aggressive, or if your dog is prone to aggressive behavior, Aggressive dogs can cause severe injury and even death to their owner and others. If you are unsure whether this product is appropriate for your dog, please consult your veterinarian or certified trainer.

## CAUTION:

**Risk of skin damage:** Please read and follow the instructions carefully in this guide, Proper fit of the collars is important because a loose collar may cause inconsistent performance. A collar worn for too long or made too tight on the pet's neck may cause skin damage, ranging from redness to pressure ulcers (commonly known as bedsores). These collars can cause pressure necrosis if used incorrectly and is often misidentified as burns.

- Avoid leaving the collar on the dog for more than 12hours per day.
- When possible reposition the collar on the pet's neck every 1 to 2hours.
- Check the fit to prevent excessive pressure, and it is okay to trim any excess strap length.
- Never connect a lead to the electronic collar because it may cause excessive pressure on the contacts.
- Wash the dog's neck area and contacts of the collar weekly with a damp cloth.
- Examine the contact area daily for signs of a rash or a sore.
- If a rash or sore is found, discontinue use of the collar until the skin has healed.
- If the condition persists beyond 48 hours, see your veterinarian.

These steps will help your pet safe and comfortable. Millions of pets are comfortable while wearing stainless steel contacts. Some pets are sensitive to contact pressure. You may find after some time that your pet is very tolerant of the collar. If so you may relax some of these precautions, It is important to continue daily checks of the contact area, If redness or sores are detected, discontinue use until the skin has fully healed.

Thank you for choosing the ipets brand! You and your pet deserve a companionship that includes memorable moments and a shared understanding together. Our mission is to ensure your pet's safety by providing you the tools and techniques to successfully train your pet. Should you have any queries, please contact our customer service.

**NOTE:** Please charge before using the product.

# Components

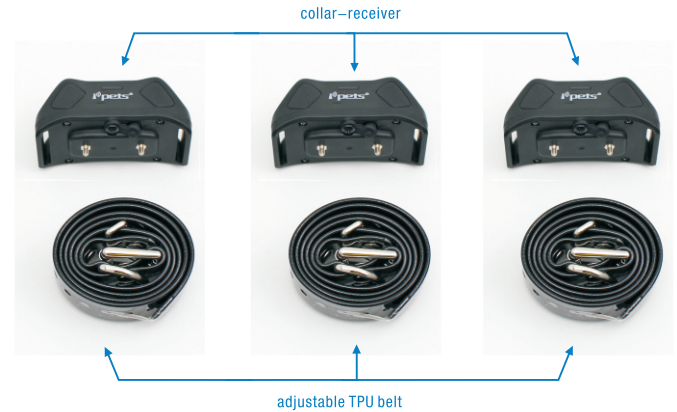
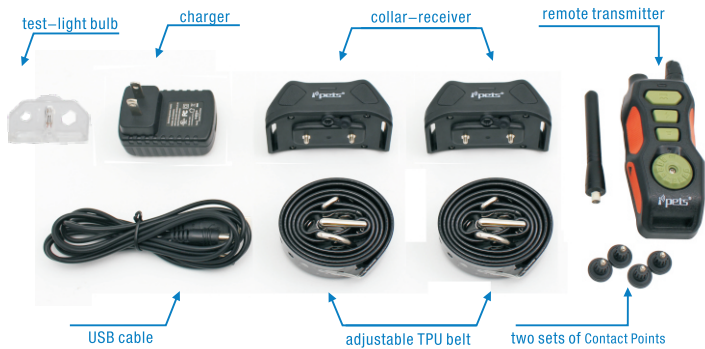
## PET618-1(1 for 1)



## PET618-3(1 for 3)



## PET618-2(1 for 2)



## How the dog training system works?

iPets products are reliable, effective, and comfortable for large or small dogs. The system assists in controlling your dog without a leash in a range up to 880 yards away! Instantly send a signal from the Remote Transmitter, which activates your dog's Collar Receiver. The dog will receive an annoying but safe, harmless stimulation. With correct, consistent use of this product, the dog will associate his misbehavior with your corrections, and soon enough, you will have a well-trained dog. This particular model features adjustable levels of stimulation and multiple types of stimulation, enabling the user to tweak accordingly to the dog's temperament, removing the risk of over stimulation or incorrect usage of stimulation.

## Features

- Rechargeable Remote Transmitter and Collar Receiver.
- Waterproof Remote Transmitter and Collar Receiver.
- 8 intensity levels of Vibration.
- 8 intensity levels of Static Shock.
- Easy to use, adjustable Intensity Dial.
- Trouble free Receiver Selector Dial.
- Simple, ergonomic design layout.
- Belt Clip.
- Quick and straightforward pairing process.
- Range of 880 Yards.
- Capable of simultaneous control of three dogs (extra receivers are purchasable).
- Adjustable, thick TPU strap to accommodate any size of dog.
- Auto-off feature to conserve power when not in use to extend battery life.
- Remotely turn on/off Collar Receiver.
- 3 modes: Tone, Vibration and Static Shock.

## Key Definitions



## Remote Transmitter

- **Antenna:** Transmits signal from Remote Transmitter to the Collar Receiver.
- **Transmitter Indicator Light:** When pressing stimulation buttons the Transmitter Indicator Light flashes green and solid red when charging the battery.
- **Intensity Dial:** Rotate the dial to adjust the level of stimulation from 0 – 8. In addition, powers on and off the Remote Transmitter.
- **Receiver Selector Dial:** Rotate the dial to select a receiver. Up to three receivers can pair to the Remote Transmitter.
- **Vibration Button:** Delivers vibration stimulation to the selected receiver.
- **Static Shock Button:** Deliver static shock stimulation to the selected receiver.
- **Tone Button:** Sends a tone signal to the selected receiver, which then emits a tone.

- **Transmitter Charging Jack:** Charges the battery of the Remote Transmitter when connected to a power source.
- **Belt Clip:** Allows for the possibility of hands free training.
- **Remote Transmitter Pairing Symbol:** Pairs the Remote Transmitter to the Collar Receiver(s) or powers off the Collar Receiver when properly aligned.
- **Rubber Cover:** Protects the internal components of the Remote Transmitter from dust and water. Always remember to replace after charging is complete.

## Collar Receiver



- 1 Contact Points:** Contact points cover the metal screws, and through them static shock stimulation is delivered.
- 2 Collar Receiver Charging Jack:** Charges the battery of the Collar Receiver when connected to a power source.
- 3 Collar Receiver Pairing Receptacle :** Pairs the Collar Receiver to the Remote Transmitter or powers off the Collar Receiver.
- 4 Rubber Cover:** Protects the internal components of the Collar Receiver from dust and water. Always remember to replace after charging is complete.

## 5 Receiver Indicator Light:



- When the Collar Receiver is charging the light will be a solid red; it switches to green when fully charged.
- In standby status, the Receiver Indicator Light will flash green periodically.
- Stimulation Buttons pressed on the Remote Transmitter will cause a green light to appear on the Collar Receiver.
- Initiating the pairing process of the Remote Transmitter and Receiver Collar will produce a solid green light.
- Powering off the Collar Receiver will give off a red light.

## Operating Guide

### Step 1 - Prepare the Remote Transmitter

#### Charge the Remote Transmitter

- Uncover the Transmitter Charging Jack by lifting the Rubber Cover.
- Insert the charging connector into the Charging Jack.
- Plug the charger into a standard wall outlet.
- A solid red light will appear on the Transmitter Indicator Light, indicating charging is occurring.
- Once charging is complete, the solid red light will turn to a solid green light.
- Replace the Rubber Cover to protect the Transmitter Charging Jack.

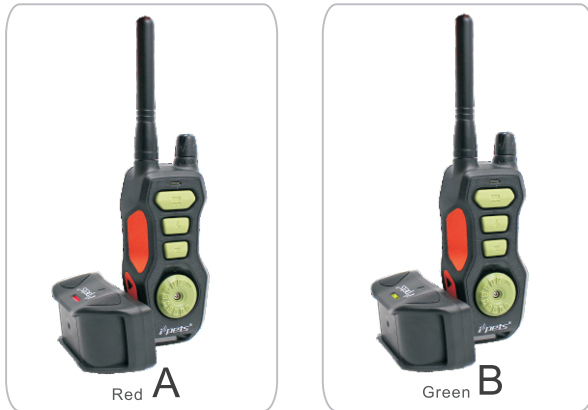
**Note:** Before first use, charge the Remote Transmitter until completion of the charging process



### Powering on and off the Remote Transmitter(Figure1-1)

To power on the Remote Transmitter rotate the Intensity Dial so it's no longer selecting "off." If done correctly, the Transmitter Indicator Light will be flashing green.

To power off the Remote Transmitter rotate the Intensity Dial to select "off," the Transmitter Indicator light will cease flashing.



(Figure 1-1)

## Step 2 - Prepare the Collar Receiver

### Charge the Collar Receiver

1. Uncover the Collar Receiver Charging Jack by lifting the Rubber Cover.
2. Insert the charging connector into the Charging Jack
3. Plug the charger into a standard wall outlet.
4. A solid red light will appear on the Receiver Indicator Light, indicating charging is in progress.
5. Once charging is complete, the solid red light will turn to a solid green light.
6. Replace the Rubber Cover to protect the Collar Receiver Charging Jack.

### Powering on and off the Collar Receiver

There are two ways to power on and off the Remote Collar Receiver:

#### Option 1:

If the Collar Receiver is off, hold Vibration Button 1 first and then press and hold Beep Button 1 for 5 seconds to turn on the Collar Receiver;

If the Collar Receiver is ON, hold Vibration Button 1 first and then press and hold Beep Button 1 for 3 seconds to turn off the Collar Receiver;

#### Option 2:

Align the Remote Transmitter Pairing Symbol with the corresponding Collar Receiver Pairing Symbol, once the Receiver Indicator Light is green separate the two Pairing Symbols. The Collar Receiver is now on.

Align the Remote Transmitter Pairing Symbol Transmitter with the corresponding Collar Receiver Pairing Symbol, once the Receiver Indicator Light goes red separate the two Pairing Symbols. The Collar Receiver is now off.

The Collar Receiver also comes with auto-off feature: if the Collar Receiver does not receive any signal from the Transmitter or any operation within one hour, the Collar Receiver will automatically be turned off to save the battery power. You need to turn on the Collar Receiver by either way of above mentioned in order to operate the unit.

### Step 3 - Pairing Collar Receiver to Transmitter

1. Rotate the Intensity Dial so it's no longer selecting "off," the Remote Transmitter will now be powered on.
2. Rotate the Receiver Selector Dial to 1, indicating the first receiver for pairing.
3. Ensure the Collar Receiver is off.
4. Align and the Remote Transmitter Pairing Symbol with the corresponding Collar Receiver Pairing Symbol, hold until the Receiver Indicator Light is a steady green, once the steady green light begins to flash, press any of the stimulation buttons. Pairing is now complete.
5. If needing to pair a second or third Collar Receiver, repeat these steps but rotate the Receiver Selector Dial to 2 or 3, depending on what Receiver Collar you're pairing.

### Step 4 - Test the Training System Functions

The testing methods will help determine whether the training system is functioning as intended. Please ensure that the pairing process is complete before attempting to test the functionality.



(Figure 2-1)



(Figure 2-2)

### Testing the Static Shock Function(Figure2-1)

1. Put the test bulb over the Contact Points of the Collar Receiver.
2. Power on the Remote Transmitter and adjust the Intensity Dial off 0.
3. Select the correct Collar Receiver with the Receiver Selector Dial.

4. Press the Static Shock Button and the test bulb will flash orange, indicating the static shock function is operating correctly.

Note: If wanting to test the shock function on yourself, please ensure your finger or hand is across on contact points to ensure the connection is complete. Otherwise, user will feel no stimulation.

### Testing the Vibration Function(Figure2-2)

1. Power on the Remote Transmitter, and adjust the Intensity Dial off 0.
2. Select the correct Collar Receiver with the Receiver Selector Dial.
3. Press the Vibration Button and the Collar Receiver will respond appropriately.

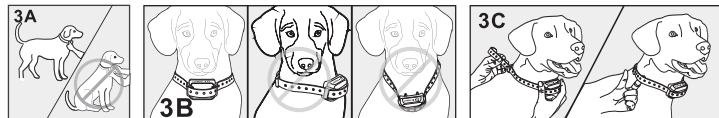
### Testing the Tone Function

1. To power on the Remote Transmitter move the Intensity Dial from the "off" position.
2. Select the correct Collar Receiver with the Receiver Selector Dial.
3. Press the Tone Button, the Collar Receiver will emit a tone.

### Step 5 - Fit the Collar Receiver

Important: The proper fit and placement of the Collar Receiver is essential for effective training. The contact points must have direct contact with the dog's skin.

- (1) To fit the Collar Receiver, attach the Collar Strap to the Receiver.
- (2) With the dog standing in front of you, place the Collar Receiver around the dog's neck, so the receiver box and Contact Points are on the underside of your dog's neck, making direct contact with the dog's skin. If direct contact is not possible, shaving some fur away, ensuring good contact is recommended.
- (3) Fasten the collar strap. The fit should be snug, but not taut. A finger should be able to be placed beneath the collar strap when around the dog's neck.
- (4) Allow the dog to wear the Collar Receiver for several minutes and check the strap again. The dog will soon become more familiar with the Collar Receiver, so it is crucial to ensure the fit comfortable and flattering.



## CAUTION: RISK OF SKIN DAMAGE

For comfort, safety and effectiveness of this product please check the fit of the dog's collar frequently. If observing any skin irritation, immediately discontinue use of the collar for a few days. If the skin condition persists beyond 48 hours, consult a veterinarian. These collars can cause pressure necrosis, commonly known as bed sores, if used incorrectly and is often misidentified as burns.

Do not attach a leash to the collar, which can result in squeezing the Contact Points too tightly against your dog's neck.

The design of the Collar Receiver discourages constantly wearing the device. iPets recommends the collar not wearing for more than 12 hours out of every 24-hour period.

Most dogs feel uncomfortable when wearing the collar for the very first time. Do not use any functions until the dog is accustomed to the collar.

iPets suggests giving the dog, the vibration stimulation before following it with a static shock. After training for a while using this method, the dog will be aware that after vibration comes a static shock. Vibration will act as a warning, and static shock only acts as a menace that might be necessary sometimes.

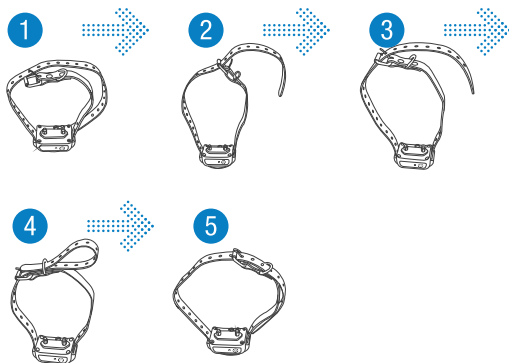
## Step 6 - Re-thread the collar

### Regular Maintenance

Ensure Contact Points are not too tight on a weekly basis.

Rinse the Contact Points with alcohol on a weekly basis.

Check the dog's neck for irritation and wash the dog's neck on a weekly basis.



## Frequently Asked Questions:

### How old does the dog have to be before using the system?

Your dog should have learned basic obedience commands such as, "sit" or "stay." The Collar Receiver might be too large for dogs under 15lbs.

### Once my dog completes training and is been obeying my commands, will he have to wear the collar?

Probably not, but you may try to reinforce training with the collar.

### Can I use the iPets rechargeable training collar with more than one dog?

Yes, you just need to purchase another Collar Receiver for the system.

### Is the Collar Receiver waterproof?

Yes, but always ensure that the Rubber Cover seals the Charging Jack.

### Can I replace the Collar receiver with another kind of collar?

No.

### Can I attach a leash to the Collar Receiver?

No, this can result in pulling the Contact Points too tightly against the dog's neck. Attach a leash to a separate, nonmetallic collar or a harness. Ensure the extra collar does not put pressure on the Contact Points.

### How long can I leave the Collar Receiver on my dog?

The design of the collar discourages constant wearing. We recommend not having the dog wear the collar for more than 12 hours out of every 24-hour period.

### Is the training system suitable for all dogs?

The collar is adjustable from length 5.9" (15cm) to 19.6" (50cm), if the dog's neck circumference is smaller than 5.9", you will be forced to rethread the collar, if the dog's neck circumference is larger than 22", this collar may not be suitable for the dog. This collar is not suitable for dogs under 15lbs.



## Troubleshooting

### **My dog is not responding after the training system installed successfully.**

Charge the Remote Transmitter and Collar Receiver for 6 hours, separately before first use.

Ensure if the Remote Transmitter and Collar Receiver power is on.

Check the intensity levels of vibration and static shock, making sure it is not set to 0.

Ensure the Collar Receiver has sufficient power to operate.

Check the collar to ensure it fits snugly against your dog's neck.

If tested for all of the above and the dog is still not responding, please try re-pairing the Remote Transmitter and Receiver Collar.

### **The Remote Transmitter does not work.**

Check the battery status of the Remote Transmitter.

Press and hold the Right Side Button for a few seconds to power on the Remote Transmitter.

### **I want to test the Collar Receiver on myself, but it does not work.**

When testing the Collar Receiver with your hands, please touch the two electrodes simultaneously, as touching one electrode will not work.

## General Training Tips

The following tips on how to get the best out of your iPets Training Collar.

(1) Make training sessions short and positive (between 10-15 minutes long for each session.) This will enable the dog to keep its attention focused on the trainer.

(2) Train one dog at a time.

(3) During the first initial training sessions, keep the dog in a familiar outdoor environment. Training in new locations may cause the dog to become distracted, causing you to reinforce commands with the Collar Receiver more than necessary.

(4) Use a long leash fastened to a non-metallic collar to help the dog's learning. Ensure the additional collar and lash does not interfere with the Contact Points of the Collar Receiver. Do not use the remote training collar without a long leash until your dog is fully trained.

(5) More success will occur by teaching the dog a command first before trying to reinforce the command with the Remote Transmitter.

(6) For basic obedience training, vibration is more useful.

(7) Issue one obedience command at a time, this will reduce confusion and allow the dog to remain focused. Do not use the training system for commands that the dog has not learned.

(8) During training, look for all the positive changes in the dog's behavior and remember to reinforce them promptly with ample praise and reward.

(9) Avoid over-correcting your dog. Use as little remote correction as possible during the training process.

(10) When the dog has become apparently perplexed, shift the focus of the training by drawing the dog's attention to a command they have familiarity. Example: Tell the dog to sit and give abundant praise and encouragement on successful completion of the sit command.

(11) Do not use the training system to correct or eliminate forms of aggression or biting behavior. When the dog is showing signs of aggressive behavior, immediately contact a professional dog trainer in your local area.

(12) Please keep in mind, that you should keep training sessions short and end every session on a high note. Stop Training and play with the dog as soon as the dog has accomplished a new level of proficiency.

If needing more training tips, please visit us at [www.ipets-mall.com](http://www.ipets-mall.com) or [www.facebook.com/ipetsmall](http://www.facebook.com/ipetsmall) for plenty of resources.

## LIMITED 90 DAYS WARRANTY

iPets warrants this product to be free of defects in parts, materials and workmanship for a period of 90 days, from date of purchase.

Should any repairs or servicing under this warranty be required, contact Customer Service by phone or email for instructions on how to pack and ship the product to iPets.

## iPets CUSTOMER SERVICE

Telephone: 1-866-877-7949

Email: [service@ipets-mall.com](mailto:service@ipets-mall.com)

Hours: Weekdays 9:00 AM- 5:00 PM EST

This warranty gives you specific legal rights and you may also have other rights which vary from state to state.