

Rechargeable Spray Bark Control Collar

Owner's Manual



Thank you for purchasing this product. Through consistent and proper use of this Rechargeable Spray Bark Collar, you can have a well behaved dog in less time compared to other bark training methods and tools. Please read this manual carefully before use to ensure that the collar functions properly.



1.) Precautions

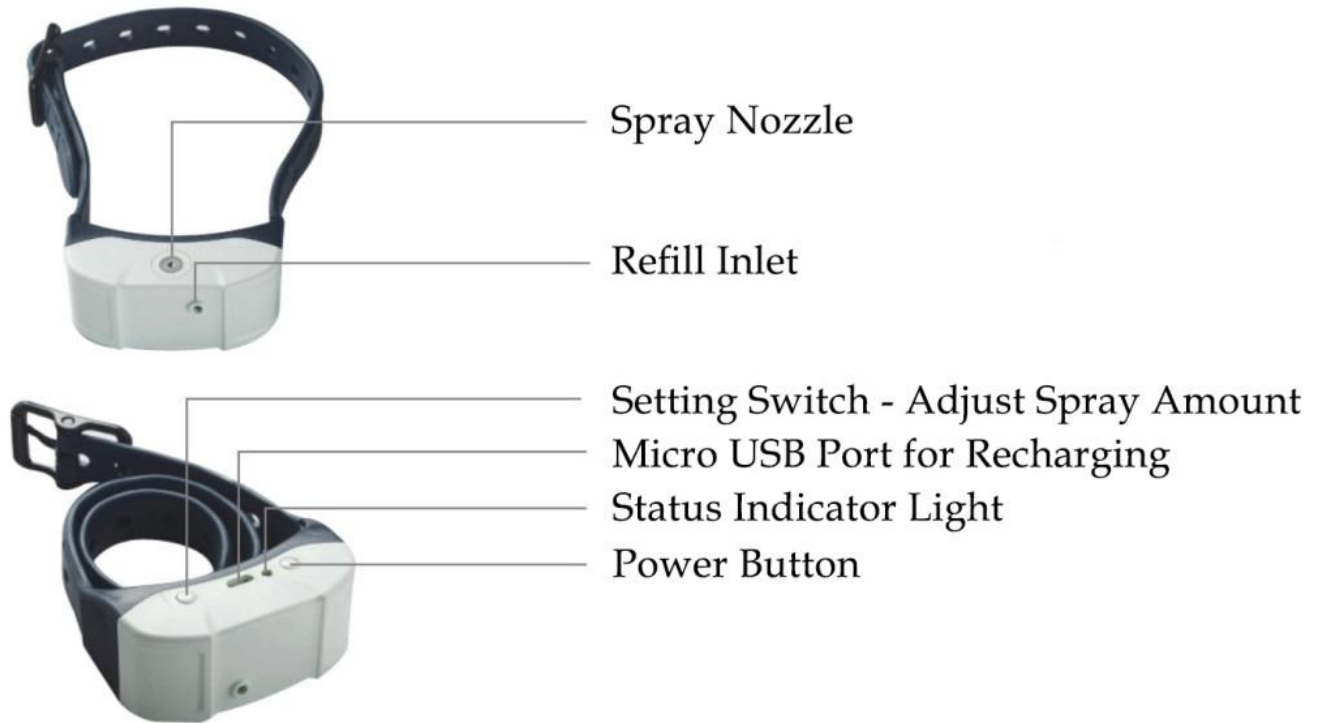
NOTE

- 1.) This product is suitable for dogs weighing at least 3.6kg.
- 2.) The law prohibits the use of this product on humans.
- 3.) Turn the collar off or take it off of the dog during playtime to avoid unnecessary spray corrections.

WARNING

- 1.) Keep out of reach of children. This is not a toy.
- 2.) Do not store the collar and the refill canister near a furnace or any surface or area with high temperature.
- 3.) Improper battery handling and care may lead to leakage or even fire.
- 4.) The manufacturer will not be held responsible for any direct or indirect damage or loss due to the improper usage of this product.

2.) Description



3.) Parts



Bark Collar Unit



USB Charging Cable



Citronella Spray Canister



Owner's Manual

4.) Battery and Charging Indicator

The Lithium-Ion battery can be recharged several times for extended use. Use the included USB Charging Cable to recharge the Rechargeable Citronella Spray Bark Collar.



The Status Indicator will flash RED when the Bark Collar is low on battery.

This panel shows the bark collar unit with a red status indicator light. To the right is a battery icon with a red bar at the bottom, indicating low battery.



The Status Indicator will turn GREEN once battery is fully charged.

This panel shows the bark collar unit with a green status indicator light. To the right is a battery icon with a green bar at the top, indicating a fully charged battery.

5.) Features

- 1.) The Rechargeable Citronella Bark Control Collar consumes less power compared to other brands and models. The unit is completely rechargeable to reduce environmental pollution from battery waste.
- 2.) The Citronella Spray Strength is adjustable. Depending on your dog, you may adjust using the Setting Switch indicated in the Description. The initial setting is set to Weak.
- 3.) Your dog's bark is detected by a built in vibration sensor. Once your dog's bark is detected, the bark collar will spray a measured amount of citronella to distract it from barking. The citronella spray is harmless for both humans and dogs and is environment friendly.
- 4.) The Citronella used in this bark collar is Citronella Essence Oil without CFC ingredient which is safe for humans and dogs. Each canister weighs 85g.
- 5.) The Citronella Bark Collar can identify your dog's bark vs other noises which allows it to deliver accurate sprays.
- 6.) Your dog will be able to learn how the Spray Bark Collar works in no time. No long term training required.
- 7.) The Citronella Spray Bark Collar when at full capacity can spray for up to 20 times.
- 8.) The dog owner should praise the dog after the dog stops barking when the collar activates to encourage the behavior and obtain long term results.

6.) Proper Care and Usage

Some dogs may find the Citronella Spray Bark Collar to be an unwelcomed accessory and may get confused or scared when the citronella spray activates. It is the dog owner's job to calm the dog and guide it throughout the training process so the dog can adapt to it quickly and provide results.

- 1.) The product is suitable for dogs at least 3.6kg in weight. Please use it for the purposes only described in the owner's manual.
- 2.) The dog's skin may be prone to infection or damage if the collar is kept on for long periods of time. To avoid this, please refer to the following:
- 3.) Check frequently if the dog is developing a bruise on the neck or skin around the collar.
- 4.) When you use this product on your dog, it is best to monitor your dog for about 1 to 2 days.
- 5.) Proper fitting is important. Ensure that the collar is strapped not too tight and not too loose. A finger should be able to fit between the collar and the neck for a proper fit.
- 6.) Wash the dog's neck and the collar's vibration sensor at least once a week.
- 7.) Do not try to disassemble or fix the bark collar yourself. Warranty will be void if you do so.
- 8.) Stop using the collar immediately if your dog resists or responds to it severely.
- 9.) It is recommended that this collar is used only on dogs at least 6 months of age and weighs at least 3.6kg.
- 10.) It is not recommended to use this collar for 12 hours straight each day.

7.) Troubleshooting

| | |
|-----------------------------------|--|
| The Collar will not Work | When the status light flashes GREEN continuously and cannot start, it is low on power and needs to be recharged. |
| | When the status light flashes RED once, the battery is low and needs to be recharged. |
| | When the status light flashes RED twice, the bark collar is low on citronella spray and needs a refill. |
| | When the status light flashes RED 5 times, it needs a refill and the battery needs a recharge. |
| | If the Bark Collar still does not work, please contact your local distributor for support. |
| No Reaction from Citronella Spray | Ensure that collar is fit and snug on the dog's neck so the vibration sensor can work properly. |
| | Check and ensure that the spray nozzle is aimed in front of the dog's nose. |
| | Make sure that the dog's fur is not affecting the citronella spray. |

8.) Technical Parameters

- 1.) Standard Chargers: General phone USB charging adaptor or plug in on computer's USB port.
- 2.) Li-Ion Battery (DC 3.7V)
- 3.) Power Supply (DC 3.1V to 4.2V)
- 4.) Idle Current: 240uA
- 5.) Spray Current: 10-25mA

Status Light Indicator

- 1.) When the status light flashes GREEN continuously and cannot start, it is low on power and needs to be recharged.
- 2.) When the status light flashes RED once, the battery is low and needs to be recharged.
- 3.) When the status light flashes RED twice, the bark collar is low on citronella spray and needs a refill.
- 4.) When the status light flashes RED 5 times, it needs a refill and the battery needs a recharge.



Turning the Collar On

1. Push the Power Button for 2 seconds. The GREEN light will flash once. (When the RED light flashes once in 5 second intervals, the collar is in normal working status.)
2. When the collar is fully charged, turn it on. If the RED light flashes twice and still cannot start, there is no citronella spray in the tank. Turn the collar off, refill and turn it back on.



Turning the Collar Off

Push the Power Button for 2 seconds. The GREEN light will flash continuously.

Citronella Spray Levels

The citronella spray level is adjustable to suit the dog's size and temperament. The collar is set to weak in it's out of box state.

Changing Citronella Spray Levels

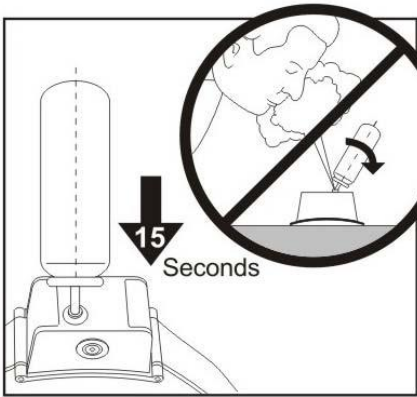
Push the Setting Switch once. When the RED light is on, it is set to STRONG. Push the Setting Switch again and the setting will be in WEAK when the GREEN light is on.





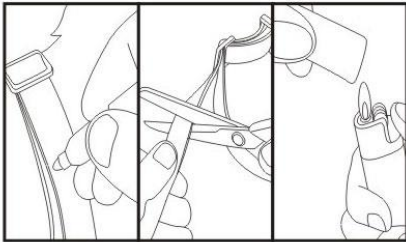
Charging the Collar

To recharge the Citronella Spray Bark Control Collar, turn the unit off and connect your USB cable to a standard phone charging adaptor or a computer's USB port. Plug in the Micro USB end to the Micro USB port on the collar and the unit should start charging.



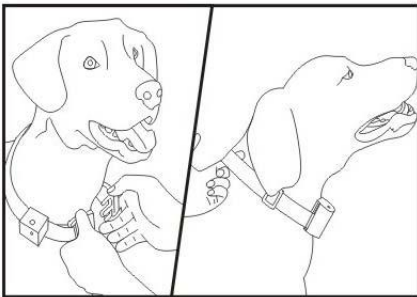
Refilling the Collar with Citronella Spray

Drain off the excess air from the tank by pushing the valve with a blunt tool or a screwdriver. Turn off the Bark Collar, position the refill canister downwards and keep it vertical. Push the canister down on the valve for 15 seconds.

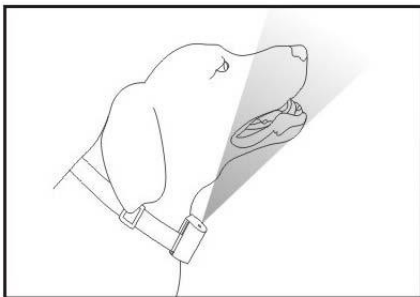


Fitting Guide

Adjust the collar strap to fit your dog snugly. Cut off the excess and burn the end to keep the collar strap from getting undone.



Attach the Bark Collar Unit on the collar strap and put it on the dog. Ensure that the nozzle of the bark collar should be pointing towards the front of the dog's nose. A finger must be able to fit between the collar strap and the neck for a good fit. An improper fit will prevent the collar from being effective.



If your dog has long hair, it is recommended to trim the fur around the neck area consistently to ensure that none of it is blocking the citronella spray whenever it activates.