



PG-300 and PG- 302

Owner's Manual

**“Communication with your
Best Friend has Never Been Easier”**



PG 300 Series Communicator

Remote Communication Collar

Thank you for purchasing the PG-300 or PG-302 Remote Pager from E-Collar Technologies, Inc. We have made every attempt to provide you with the most technologically advanced product using the most stringent quality and manufacturing standards.

We are confident you will be pleased with the results you will attain with your pager. Please remember you will get better results with the use of lower vibration combined with consistent training techniques. Some techniques require a high value reward immediately after the correct behavior has been performed. To prevent desensitization the use of high levels of vibration should only be used when lower levels do not produce the desired results, Visit our youtube channel for training videos and "Like" our Facebook page to network with fellow pager users.

Good luck with your training and please feel free to contact us should you have any questions.

1-260-357-0051 or sales@pageronly.com

02

TABLE OF CONTENTS

- Important Notice	03
- Characteristics	04
- Package Contents	05
- Device Operation.	06
- Charging the Batteries.	07
- Turning Your E-Collar ON/OFF.	08
- Correctly Fitting Collar	09
- The LCD Display Description.	10
- Button Functions	11
- How to Find the Proper Vibration Level	13
- Lock/Unlock the Vibration Level	14
- How to Set the Boost	15
- Lost Transmitter Mode	16
- Replace/Add A Collar	17

Two Dog 302 Specifics

- 302 LCD Description	18
- 302 Button Functions	19
- How to Lock/Unlock the Vibration Level	21
- 302 Boost level Setup	22
- Training Tips	23
- Troubleshooting	24
- Two Year Warranty	25
- Accessories	26
- Safety and General Information	27

IMPORTANT NOTICE

This product is intended to be used on animals only.

E-Collar Technologies, Inc. is not responsible for any misuse of this product including damages from dog bites and lost items. Seek an evaluation by a professional trainer before use on aggressive dogs. It is not uncommon for aggressive dogs to associate the vibration with the handler and take action against the handler. Sometimes dogs put under pager pressure during a fight can exhibit redirected aggression and become more aggressive. All risks associated with the use of this product is the sole responsibility of the user at the time of the loss.

The range of the PG 300/302 may vary according to terrain, weather conditions, foliage, and power lines as well as radio transmissions from other devices.

04

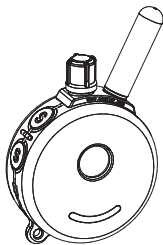
CHARACTERISTICS

- Range : ½ Mile
- Three Vibration Modes Supported
(Momentary, Continuous, and Combo Mode)
- The right button can be set to Tapping Sensation or Tone

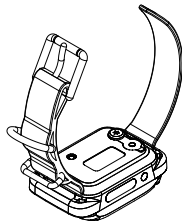
- Quick Charge Li-Polymer Batteries
- Convenient Intensity Dial for Quick Adjustment
- Vibration Levels Adjustable from 0 to 100
- Collar Receiver Light for locating your dog at night
- Lock and Set Stimulation Safety Feature
- Vibration Boosting Mode provides instant control when normal vibration is ignored - great for emergency situations. User
- Adjustable Boosting Levels from 1 to 60 Levels
- Completely Waterproof
- Convertible from 1-Dog model (PG 300) to 2-Dog model (PG 302) see page 17.

PACKAGE CONTENTS

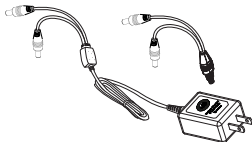
- Transmitter



- Collar Receiver with Strap
(PG 302 Package includes
2 Receivers and straps)



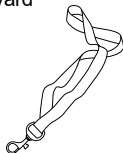
- Battery Charger
(PG 302 package contains
splitter cable)



- Owner's Manual

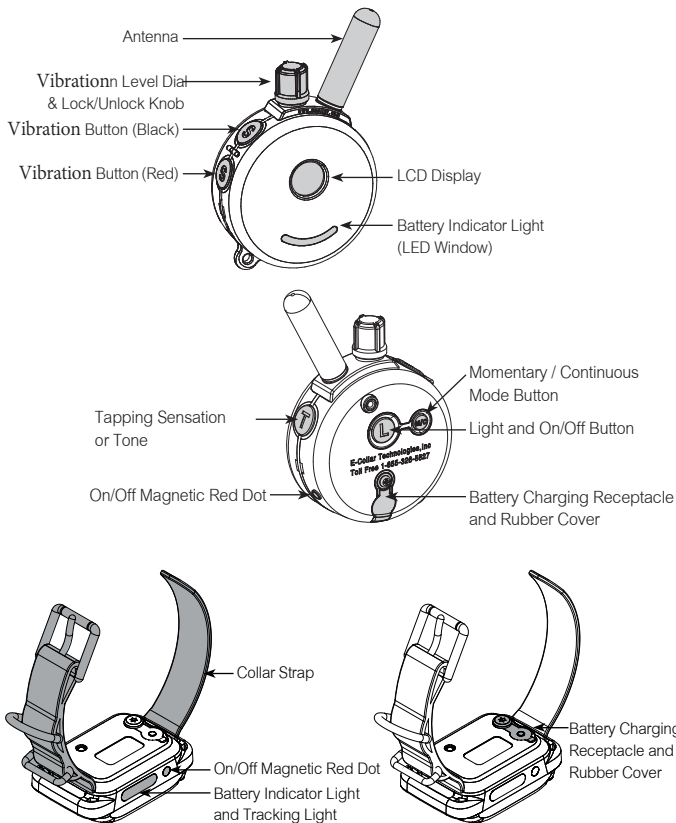


- Lanyard



06

DEVICE OPERATION

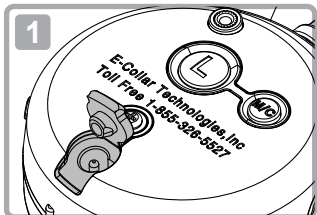


CHARGING THE BATTERIES

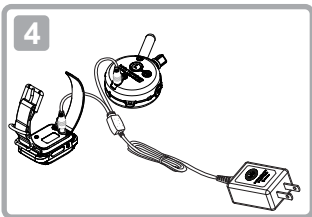
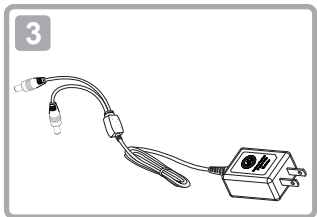
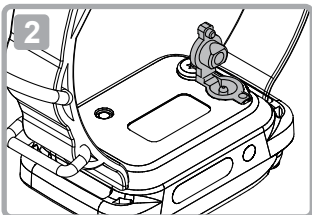
Indicator Light is blinking “Green” under normal operation.
 solid “Red” when vibration is applied.
 blinking “Red” when recharging is required.

**Do not allow the batteries to get hot or be fully discharged,
 store at room temperature and 50% capacity charge.**

Transmitter Battery Charging
 Receptacle and Rubber Cover



Collar Receiver Battery Charging
 Receptacle and Rubber Cover



- The indicator light will turn solid red during charge cycles and turn green if it is fully charged. (approximately 2 hours)

Please add this about the batteries:

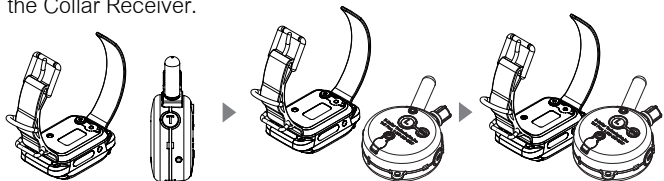
Your pager is outfitted with Li Polymer batteries which requires specific care to assure longevity. It is best not to let the battery be fully discharged and if it does, recharge immediately or irreversible damage may occur.

Keep the units away from extreme heat and cold temperatures.

TURNING YOUR E-COLLAR ON/OFF

- To turn the Collar Receiver On or Off :

Place the small red dot on the Transmitter to the small red dot on the Collar Receiver.



- To turn the Transmitter On or Off :

Press the "L" button for more than 1 second.

If the Transmitter is turned on, a short press of the "L" button will activate the tracking light of the collar receiver. Press and hold for 2 seconds to turn Transmitter off.

- Holding the Transmitter

To obtain the maximum range hold the transmitter like the torch on the Statue of Liberty. Keep the antenna away from your body or fingers at all times, touching the antenna will greatly reduce the range.



[Long Range]

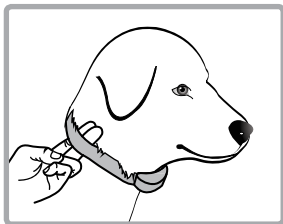


[Medium Range]



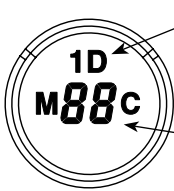
[Short Range]

CORRECTLY FITTING COLLAR



You should be able to fit a couple of fingers between the collar strap and your dog's skin. Too tight poses discomfort. Too loose will not be able to administer the vibration consistently. If your dog seems overly sensitive to the vibration try loosening the collar strap.

THE LCD DISPLAY DESCRIPTION



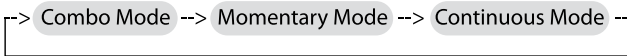
Blinking "1D" indicates the vibration level ready for adjustment.

Solid "1D" indicates vibration level is "Locked"

Displays the Vibration Level :

"0" means no vibration and "HI" means the highest vibration level(100)

Momentary / Continuous Button "M/C"- M/C Button on the backside of the transmitter allows the user to easily switch between the three vibration modes. Function of **vibration** button changes by mode.



Vibration Button	Combo Mode	Momentary Mode	Continuous Mode
Display			
S (Black)	Momentary	Momentary	Continuous
S (Red)	Continuous	Momentary Booster	Continuous Booster
S(Black)+S(Red)	Momentary Booster	N/A	N/A
S(Red)+S(Black)	Continuous Booster	N/A	N/A
T	Tapping Sensation or Tone		

BUTTON FUNCTIONS

Momentary Vibration

Sends a single pulse of vibration at the set level when you press the **vibration** button.

Continuous Vibration

Sends vibration for as long as the button is pressed, timing out after 10 seconds (this is a safety feature designed to prevent accidental over-**vibration** of your dog). The stimulation can be increased or decreased while the button is being pressed.

Tapping Sensation

Vibration specifically designed to distract your dog.

Tone

Flat sound up to 30 second.

Stimulation Button S (Black)

- Sends momentary or continuous vibration to the collar receiver based on the state of Momentary/Continuous Mode.

Stimulation Button S (Red)

- Sends momentary or continuous boosted vibration.
- If vibration level is 10, boosted vibration sends [10 + boost level]
- The default value of the boosted level is 5, it can be adjusted to any value between 1 and 60. Smaller and more sensitive breeds should use levels 1 through 20, larger and/or more stubborn breeds may need a higher boost.

12

BUTTON FUNCTIONS

Boosting Vibration in Combo Mode

Momentary Boosting is accomplished by first sending a momentary vibration pulse "S (Black)" to the dog and then pressing "S (Red)" button without releasing "S (Black)" button. (PLEASE PRACTICE)

Continuous Boosting is accomplished by first administering continuous vibration "S (Red)" to the dog and then pressing the "S (Black)" button without releasing the "S (Red)" button.

Tapping Vibration / Tone "T"

Sends Tapping Sensation or Tone to the collar receiver.

(Default setting is tone).

To toggle between tapping sensation and tone press "L" and "T" buttons simultaneously when the intensity level is "0".

- Single beep and "A" icon indicates tone.
- Double beeps and "T" icon indicates Tapping Sensation (Vibration).

Tone ↔ **Tapping Sensation**

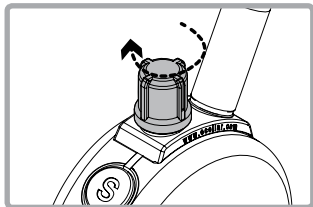
Light Button "L" (ON/OFF Center Button on Back)

Pressing "L" button will change the night tracking light mode.

OFF -> Flashing -> Solid -> OFF

Great for locating your dog after dark. (PLEASE PRACTICE)

HOW TO FIND THE PROPER VIBRATION LEVEL



Rotating clockwise increases the **vibration** level, and rotating counter-clockwise lowers the **vibration** level.

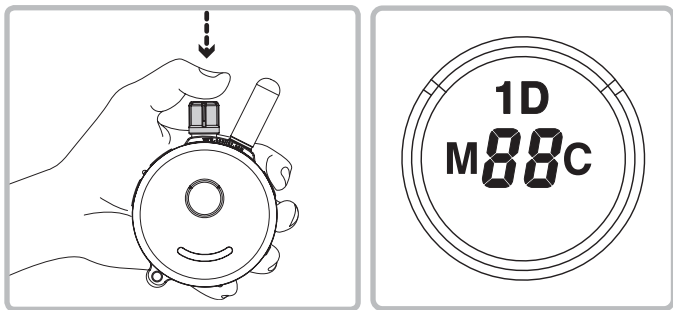
It is highly recommended that the user practices changing levels and modes before putting the collar receiver on a dog.

Setting the correct vibration level for your dog is very important. To set your “conditioning” vibration level, correctly put the collar receiver on your dog (see page 9 for instructions). Let the dog get used to the collar receiver for a couple of hours.

While watching your dog, turn the level to “0” and press the continuous **vibration** button. Slowly turn the stimulation up at a rate of approximately 2-3 levels per second. When your dog first perceives the **vibration** release the button. This is your “conditioning” vibration level. You may need to increase the “conditioning” level a few levels to get your dog to respond at first, some dogs are more **distracted** and need more **vibration**. The boosted level is typically 5 to 20 levels higher than the “conditioning” level.

14

LOCK/UNLOCK THE VIBRATION LEVEL



How to Lock/Unlock the Vibration Level

Set the desired vibration level and then press on the top of the stimulation dial until you see "1D" light up on the top portion of the LCD display. Flashing "1D" indicates unlocked vibration and Solid "1D" indicates locked vibration level.

If the vibration level does not change when you rotate the stimulation knob, you have successfully locked the vibration level.

To unlock the vibration level simply press the stimulation knob again and it will unlock the vibration level.

HOW TO SET THE BOOST

Boosted vibration adds the set boost level to the vibration level, great for those situations when your dog does not respond to the “conditioning” level. Determining the Boosted vibration level is a little more difficult than vibration level setting due to the wide differences in temperaments and vibration tolerance among the many breeds of dogs. On average, it is normally 5 to 20 levels higher than the “conditioning” level. It is important to have it set high enough to get the desired response from your dog.

1. Change the mode to Momentary Mode.
(Press M/C button until “M” is displayed)
2. Change the intensity level to “0”.
3. Press S(Black) button for more than 5 seconds.
4. The intensity level will change from "0" to a flashing "1".
5. Rotate the dial to the desired boost level (1 to 60).
6. Press S(Black) button again to save and exit the boost level changing mode.

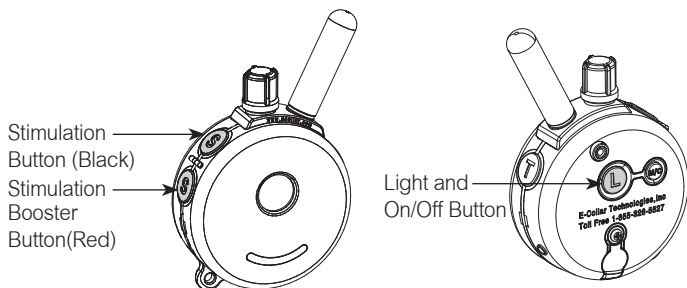
16

LOST TRANSMITTER MODE

Your PG 300/302 transmitter allows the user to turn on a 6 hour timer. After 6 hours the transmitter will begin beeping providing the ability to locate the transmitter.

Lost transmitter mode is activated by simultaneously pressing the light (L) button and then simultaneously pressing the stimulation button (Black "S") when the intensity level is set to zero. Three short beeps will sound confirming the activation of the locator timer.

Lost transmitter mode is turned off by turning your transmitter off and back on again.



REPLACE/ADD COLLAR

Occasionally, it is necessary to pair/sync a transmitter to a collar receiver, the following procedure will accomplish this:

1. Turn on the Transmitter
2. Turn intensity dial to "0"
3. Make sure the collar receiver is turned off.
4. Put the Transmitter's Red Dot against the Collar Receiver's Red Dot for more than 5 seconds, green light on Receiver will flash rapidly
5. Immediately after, press and hold Black "S" Button followed by the Red "S" Button until you hear confirmation sound from Collar Receiver.

HOW TO CHANGE THE TRANSMITTER TO A 2 DOG TRANSMITTER

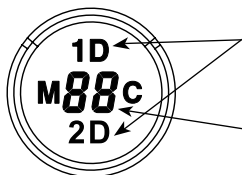
The button functions will change. The changes are described on pages 18 through 22. You can change the transmitter back to the 1 Dog system (PG 300) at any time.

1. Turn on the Transmitter.
2. Press the Red "S" followed by the Black "S" followed by the "T" Button simultaneously for more than 2 seconds until you hear the confirmation beeps.
3. Repeat step 2 to return back to a 1 dog system.

ADD/REPLACE COLLAR FOR SECOND DOG

1. Turn on the Transmitter
2. Turn intensity dial to "0"
3. Make sure Receiver is turned off.
4. Put the Transmitter's Red Dot against the Collar Receiver's Red Dot for more than 5 seconds, green light on Receiver will flash rapidly.
5. Immediately after, press and hold Red "S" Button followed by the Black "S" Button until you hear confirmation sound from Collar Receiver.

302 LCD DESCRIPTION



Blinking 1D or 2D icons indicates the vibration level is ready for adjustment. Solid icon indicates vibration level locked.

Displays the Vibration Level : "0" means no vibration and "HI" means the highest vibration level(100)

Momentary / Continuous Button "M/C"- M/C Button on the backside of the transmitter allows the user to easily switch between two vibration modes either momentary or continuous.

Button	Vibration Mode (1D or 2D)		TS(Vibration) or Tone
M/C Button	Momentary Mode	Continuous Mode	N/A
Display			
S (Black)	Dog 1 Momentary	Dog 1 Continuous	Dog 1 TS (Vib) or Tone
S (Black) + S (Red)	Dog 1 Momentary Booster	Dog 1 Continuous Booster	N/A
S (Red)	Dog 2 Momentary	Dog 2 Continuous	Dog 2 TS (Vib) or Tone
S (Red) + S (Black)	Dog 2 Momentary Booster	Dog 2 Continuous Booster	N/A
L	"L" in Dog 1 set mode will control Dog 1 light "L" in Dog 2 set mode will control Dog 2 light		N/A

302 BUTTON FUCTIONS

Mode Button "T"

Mode button allows the user to change modes as shown in the diagram



1 Dog Set Mode - LCD display shows 1D

2 Dog Set Mode - LCD display shows 2D

Tapping Sensation or Tone - LCD display a T

Light Button(On Back) "L"

When the "L" button is pressed, "L" will be displayed.

If you press L while in Dog 1 Mode, Dog 1's Light will activate.

If you press L while in Dog 2 Mode, Dog 2's Light will activate.

Tracking Light will Cycle: **Flashing** -> **Solid** -> **OFF** when L is pressed.

Tapping Sensation / Tone "T"

To toggle between tapping sensation and Tone press "L" and "T" buttons simultaneously for 2 seconds when the intensity level is "0".

- Single beep and "A" icon indicates tone.
- Two beeps and "T" icon indicates tapping sensation.

302 BUTTON FUNCTIONS

Momentary Vibration

Sends a single pulse of vibration at the set level when you press stimulation button.

Continuous Vibration

Sends vibration for as long as the button is pressed, timing out after 10 seconds (this is a safety feature designed to prevent accidental over-stimulation of your dog). The vibration can be increased or decreased while the button is being pressed.

Tapping Sensation

Vibration specifically designed to distract your dog, great for deaf dogs.

Tone

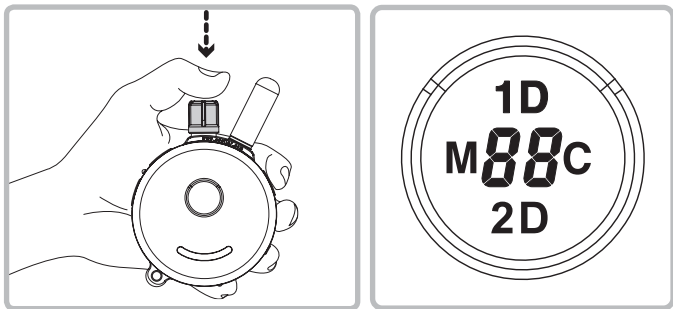
Flat sound up to 30 seconds.

Boosting Stimulation

Sends boosted vibration until you release buttons.

To boost **Dog 1**, press "S" (Black) button followed by "S" (Red) button To boost **Dog 2**, press "S" (Red) button followed by "S" (Black) button

HOW TO LOCK/UNLOCK THE VIBRATION LEVEL



How to Lock/Unlock the Vibration Level

See page 13 for help finding the proper vibration level.

You can lock each dog to a different level.

In 1 Dog Mode, if you see “1D” icon is blinking (unlocked)

Set the desired vibration level and then press the **vibration** dial until you see “1D” icon stop blinking.

In 2 Dog Mode, if you see “2D” icon is blinking (unlocked)

Set the desired vibration level and then press the **vibration** dial until you see “2D” icon stop blinking.

If the vibration level does not change when you rotate the **vibration** dial, you have successfully locked the vibration level. To unlock the vibration level simply press the **vibration** knob again at 1Dog/2Dog mode and it will unlock the vibration level.

302 BOOST LEVEL SETUP

Boosted vibration adds the set boost level to the vibration level, great for those situations when your dog does not respond to the “conditioning” level. Determining the Boosted vibration level is a little more difficult than vibration level setting due to the wide differences in temperaments and **vibration** tolerance among the many breeds of dogs. On average, it is normally 5 to 20 levels higher than the “conditioning” level. It is important to have it set high enough to get the desired response from your dog.

How to Setup Boost Level for First Dog

1. Change the mode to Momentary Mode
(Press M/C button until “M” is displayed)
2. Change the intensity level to “0”
3. Press S(Black) button for more than 5 seconds
4. The intensity level will change 0 to 1 and start to blink.
5. Rotate the dial to change the boost level (up to 60).
6. Press S(Black) button again to save and exit from Boost Level Change Mode. If any other button is pressed or idle for 20 sec, Boost Level Change Mode will be cancelled.

If you want to change boost level for dog 2, Press
S(Red) instead of **S(black)** on steps 3 and 6

TRAINING TIP

The goal is to use this tool in the most positive, least aversive manner possible. This means that the tool remains a positive reinforcer or marker of wanted behaviors, while discouraging unwanted behaviors through gentle pressure. We want to energize the dog's positive association with the vibration from the pager collar. Many trainers use the dog's most primal pleasure - food. Once you have established the dog's lowest point of perception, vibrate and treat multiple times, until the dog comes running for a treat every time he feels the vibration.

Start the dog with some basic long line work to encourage the dog to understand that you want him/her engaged and in follower mode before starting the pager collar training. Good leash skills will allow for a more successful transition to the pager collar. Start with tap and turns, put the dog on the long line. Step out, tapping the vibrate on the first step. Keep walking. Tap and turn. Take the dog through a few repeats of this. If the dog loses focus, turn the dial up a point or two until you have matched the intensity of the vibrate with the intensity of the distraction. If he starts to look unhappy, you have gone too high. Do a series of tap and turns with verbal and physical rewards for success for 20 minute sessions 3 x per day for a few days. We are marking and reinforcing the desired behaviors (turn and follow) with the low level vibration. We have more information on training on our website. Search E-Collar Technologies on youtube and subscribe to our channel, new pager training videos are posted weekly. Also "Like" and subscribe to our Facebook page to receive more training advice and connect with other e-collar users.

Good Luck with your training from your
friends at E-Collar Technologies

TROUBLESHOOTING

? My Receiver / Transmitter is not turning on

- A** Make sure the collar receiver is fully charged. Collar receiver light should turn green when the battery is connected to the charger.

? My Receiver is not responding

- A** Check Receiver's indicator light is blinking green and Transmitter LCD is on. Check to make sure the collar receiver's indicator light is red when the stimulation button is pressed.

- A** Try pairing/syncing the transmitter to the receiver. (Page 17)

? Max range of device has been decreased

- A** Check Transmitter's battery condition. Working range decreases when the battery level is low.
Keep your fingers from touching the antenna. See the bottom of page 8 for the proper technique to maximize range.

? You cannot change the vibration level of the Transmitter

- A** Make sure 1D or 2D on transmitter LCD is blinking. If 1D or 2D icons are solid, you cannot change vibration level. You can unlock the vibration level at any time by pressing the stimulation knob for 1 second.

CONTACT US FOR EXPERT HELP WITH YOUR PAGER ONLY

TWO YEAR WARRANTY

To register your PG 300/302 product, please log onto our website at www.ecollar.com, click on the warranty registration link and fill out the required information. Please register your product within 30 days of your purchase. If you do not have access to a computer, please call our **customer service number** of 1-260-357-0051 and one of our customer service representatives will register your product for you. In the event the product is not properly registered proof of purchase is not required to obtain warranty, we will estimate your purchase date by the serial number. Misuse, improper maintenance, lost units are not covered by this warranty. Your complete satisfaction is our only concern.

**"Making Communication
with your Best Friend
Easy and Reliable."**

26

ACCESSORIES

- Car Charger



- Sew-On Holster



- Belt Clip



- 3/4" Bungee Collar (24" or 30" length)



- 3/4" Quick Snap Nylon Collar (black or red)



- Deluxe Hard Carry Case



www.ecollar.com

SAFETY AND GENERAL INFORMATION

- The PG 300/302 **Pager** Collar complies with all National and International Standards and Guidelines for human exposure to radio frequency electromagnetic energy.
- Nearly all electronic devices are susceptible to electromagnetic interference (EMI) if inadequately shielded or designed without precautions to EMI.
- PG 300/302 e-collar transmitters manufactured by E-Collar Technologies, Inc. comply with Article 15 of the FCC rules and operate under Part 95 of FCC regulations.

IMPORTANT NOTICE

1. To avoid Electromagnetic Interference and/or compatibility conflicts, please turn off your transmitter and collar receiver in any facility where posted notices instruct you to do so. Never use your equipment in close proximity of a Hospital or Health Care Facility or enter the facility without turning off both units.
2. An FCC license is not needed to operate PG 300/302 remote **pager** transmitters. However, any change or modification made to the transmitter, including the supplied antenna, without the expressed written approval of E-Collar Technologies, Inc. could void your authority to operate.

SPECIAL ACCESSORY

Some dogs may be sensitive to the pager sensation. The pager reducer will significantly lower the sensation.



TRAINING NOTES

TRAINING NOTES



E-Collar Technologies, Inc.

2120 Forrest Park Drive
Garrett, IN 46738-1887

1-260-357-0051 (US & International)

1-855-326-5527 (US Toll Free)

1-855-226-5527 (US Toll Free Fax)

sales@ecollar.com
www.ecollar.com
customerservice@ecollar.com



ACCREDITED
BUSINESS

A+



Thank you for Supporting American Workers

Copyright 2015 E-Collar Technologies, Inc.

All Rights Reserved.